

# Ministry of Parks, Culture and Sport



## Annual Report for 2015-16

# Table of Contents

- Letters of Transmittal ..... 1
- Introduction ..... 3
- Ministry Overview ..... 4
- Progress in 2015-16 ..... 6
- 2015-16 Financial Overview ..... 25
- For More Information ..... 29
- Appendices**
- Appendix A - Organizational Structure ..... 30
- Appendix B - Ministry Legislation..... 31

# Letters of Transmittal



Her Honour, the Honourable Vaughn Solomon Schofield,  
Lieutenant Governor of Saskatchewan

May it Please Your Honour:

I respectfully submit the Annual Report of the Ministry of Parks, Culture and Sport for the fiscal year ending March 31, 2016.

Our government is dedicated to securing a better quality of life for all Saskatchewan citizens, by honouring commitments, responsibly managing expenditures, and increasing accountability. We are committed to *Keeping Saskatchewan Strong* by meeting the challenges of growth and sustaining opportunities for Saskatchewan people. I am pleased to report on the progress the Ministry has made.

In 2015-16, we saw record attendance at all of our tourism destinations. Our provincial parks saw nearly 3.9 million visits in 2015 – an increase of nearly 125,000 visits over the previous record set in 2013. The Royal Saskatchewan Museum (RSM) saw an 18 per cent increase in visitation over the previous fiscal year, while Government House saw an increase of 13 per cent.

Our government met its commitment of investing an additional \$10 million over four years into the provincial park system. This additional funding allowed us to open a new campground at Greenwater Lake in 2015 and a new campground at Blackstrap in 2016, along with the development of full service campsites at Buffalo Pound and Moose Mountain Provincial Parks.

The Saskatchewaner program successfully showcased Saskatchewan as a great place to live, work and play – experiencing its most successful year yet in 2015. The Saskatchewaner gained more than 20,000 followers through Facebook, Twitter and Instagram. Her videos were widely viewed – one reaching more than 24,000 views on Facebook. Due to this success, we were able to partner with Tourism Saskatchewan and the Ministries of Economy and Agriculture to launch the third year-long Saskatchewaner in January 2016.

This report outlines the progress on all initiatives set forward in the 2015-16 Ministry plan.

A handwritten signature in black ink, appearing to read 'Mark Docherty'. The signature is stylized and fluid.

*The Honourable Mark Docherty*  
*Minister of Parks, Culture and Sport*

# Letters of Transmittal



The Honourable Mark Docherty

Minister of Parks, Culture and Sport

I have the honour of submitting the Annual Report of the Ministry of Parks, Culture and Sport for the fiscal year ending March 31, 2016.

The 2015-16 Annual Report reflects the Ministry's support of Government's direction and the Saskatchewan Plan for Growth.

It demonstrates how the Ministry worked to increase quality of life and visitation to Saskatchewan through new or enhanced public programs and events offered by the Parks, the RSM, Government House and the Provincial Capital Commission.

From the Provincial Fossil exhibit and *The Nottingham Collection* in the First Nations Gallery at the RSM to the *Celebrate the Flag* exhibit and expansion of the Old-Fashioned Victorian Christmas at Government House – many initiatives targeted youth, First Nations and Métis, and new Canadians.

This report also highlights how we promoted strong families and active living through the launch of the Learn to Camp program and the formation of the Athletics Commission of Saskatchewan.

I acknowledge responsibility for the Ministry's performance and reporting, and ensure that the information contained within this report is complete, accurate and reliable.

A handwritten signature in black ink that reads "Lin Gallagher". The signature is written in a cursive, flowing style.

Lin Gallagher

Deputy Minister of Parks, Culture and Sport

Chief Executive Officer, Provincial Capital Commission

# Introduction

This annual report for the Ministry of Parks, Culture and Sport presents the Ministry's results for the fiscal year ending March 31, 2016. It provides results of publicly committed strategies, key actions and performance measures identified in the *Ministry of Parks, Culture and Sport Plan for 2015-16*. It also reflects progress toward commitments from the

Government Direction for 2015-16: Keeping Saskatchewan Strong, the *Saskatchewan Plan for Growth – Vision 2020 and Beyond*, throne speeches and the Ministry.

The annual report demonstrates the Ministry's commitment to effective public performance reporting, transparency and accountability to the public.

## Alignment with Government's Direction

The Ministry's activities in 2015-16 align with Government's vision and four goals:

### Saskatchewan's Vision

*"... to be the best place in Canada – to live, to work, to start a business, to get an education, to raise a family and to build a life."*

Sustaining growth and opportunities for Saskatchewan people

Meeting the challenges of growth

Securing a better quality of life for all Saskatchewan people

Delivering responsive and responsible government

Together, all ministries and agencies support the achievement of Government's four goals and work towards a secure and prosperous Saskatchewan.

# Ministry Overview

## Our Mandate

The Ministry supports, celebrates and builds pride in Saskatchewan. The Ministry's strategic focus is on quality of life and economic growth. The Ministry works with diverse groups and communities to enhance the province's cultural, artistic, recreational and social life; promote excellence in the arts, culture, heritage and sport; and support a vibrant and growing arts and cultural community. The Ministry manages and enhances Saskatchewan's provincial parks system, conserves ecosystems and cultural resources, provides recreational and interpretive opportunities for park visitors and is responsible for the Provincial Capital Commission.

## Our Mission Statement

Contribute to Saskatchewan's high quality of life, instill pride and enhance economic growth through management of the Saskatchewan provincial parks system, the provision of arts, culture, recreation, sport and tourism opportunities and through stewardship of provincial heritage resources.

## Service Delivery System

The Ministry's budgeted full-time equivalents (FTEs) for 2015-16 were 359.7; however the actual FTE utilization was 444.6, primarily due to increased student employment to support higher visitation within parks. An organization chart for the Ministry in 2015-16 is provided in Appendix A.

The Ministry participates in a number of federal/provincial/territorial initiatives related to parks, culture, heritage, recreation and sport. This involvement encourages knowledge exchange, informs policy and program development and partnerships with other jurisdictions and other government agencies.

The strategic lines of business within the Ministry are organized into three key program areas:

## PARKS DIVISION:

- **Park Management:** This area develops, delivers and evaluates plans, policies and programs to provide recreational and interpretive opportunities for park visitors in order to promote tourism and to conserve the ecosystems and cultural resources on park lands. It provides technical support to the regional parks system and assistance for the operation of urban parks, and is responsible for all activities associated with designation or creation of new parks.
- **Facilities:** This branch addresses all maintenance and construction requirements associated with facilities and infrastructure needs throughout the provincial parks system. Their mandate is to refurbish and upgrade existing facilities as well as to provide for new or improved facilities to meet park visitor needs.
- **Park Operations:** This area ensures provincial parks and recreation sites are operated, managed and maintained in a cost-effective and efficient manner to provide high-quality front line services to users.

## STEWARDSHIP DIVISION:

- **Sport and Recreation:** This branch provides stewardship and accountability for the lottery system and the Community Initiatives Fund. It provides leadership and policy advice regarding the delivery system for sport, recreation and community programs in Saskatchewan. It sets broad priorities to support the development of sport and recreation across the Province. It also provides financial support to the Saskatchewan Snowmobile Fund based on registration fees collected.
- **Cultural Planning and Development:** This branch provides stewardship and accountability of public investments made to the arts and cultural community, including the creative sector. It provides advisory and policy development services to government in consultation with community stakeholders to set priorities that support and enhance the future development of the cultural sector.
- **Heritage:** This branch provides policy, advisory, regulatory and other services for the protection, conservation and ongoing management and accessibility of heritage resources.
- **Royal Saskatchewan Museum:** The museum increases interest in, knowledge and understanding of, appreciation and respect for Saskatchewan's natural history and Aboriginal cultures. The RSM is a provincial museum that preserves and documents collections of objects that are representative of the heritage of Saskatchewan. It is also a tourism attraction and operates the T.rex Discovery Centre in Eastend.

## PROVINCIAL CAPITAL COMMISSION:

- The Provincial Capital Commission promotes, preserves and strengthens Saskatchewan's diverse heritage and culture through the creation of opportunities for tourism and economic development within the capital city, with emphasis on educating youth about the history of our province, and advocating pride in the capital and the province. It also coordinates and manages matters relating to Government House. In addition, the Commission is responsible for the Territorial Administration Building, Wascana Centre Authority, the Saskatchewan Archives Board and the Conexus Arts Centre.

# Progress in 2015-16

## Government Goal:

Sustaining growth and opportunities for Saskatchewan people

Meeting the challenges of growth

Securing a better quality of life for all Saskatchewan people

Delivering responsive and responsible government

## Ministry Goal

Saskatchewan Provincial Parks and Recreation Sites provide a quality experience for a growing number of visitors.

**Maintain, renew and expand park infrastructure and assets to achieve a reduction in the total infrastructure deficit for provincial parks.**

### Key Actions and Results

*Invest \$14.6M to expand and improve provincial park facilities and infrastructure, fulfilling government's commitment to invest an additional \$10M in parks' infrastructure over four years.*

- Enhanced funding in 2015-16 meets government's commitment to invest an additional \$10 million on expansion and growth opportunities in provincial parks over four years. Since 2012-13, a total investment of more than \$53 million has been made on capital upgrades, facility replacements and infrastructure expansion in the provincial park system.
- Example projects from the four year program have included construction and upgrade to campgrounds, visitor reception centres, water and sewage infrastructure, historic sites/parks, roads, boat launches and other park amenities across the province.

*Continue to implement an improved asset management system for provincial parks to modernize information and decision-making on priorities for capital investments and future maintenance across the parks system.*

- The new web-based software is operational with full implementation and utilization of the program on a park system-wide basis over the next 18 months. The newly implemented asset management system will improve the ability of the Ministry to manage the provincial park infrastructure into the future. Modernizing management of park infrastructure will ensure services continue to meet the demands of our visitors.

*Meet growing customer demands for camping.*

- In response to increased visitation to the park system, a number of projects were implemented to address the increased demand for services in 2015-16.
- Many campers prefer electrical sites and require an upgraded electrical system that will safely accommodate large, contemporary recreational vehicles and trailers. The Ministry expanded and upgraded electrical service and other infrastructure across the park system to improve visitor experience. More than 200 campsites were either electrified or had their electrical capacity upgraded.
- A new 68 campsite, full service campground at Greenwater Lake Provincial Park was opened in time for the July long weekend in 2015; camping opportunities were expanded as well at Buffalo Pound and Moose Mountain Provincial Parks.
- Upgrades to the potable water system, the sewage collection system and the trailer sewage disposal station were undertaken at Greenwater Lake Provincial Park and work was also done at Saskatchewan Landing Provincial Park to improve their water systems to ensure they are meeting public safety standards and supporting the demands of visitors.



- Nearly \$700,000 was invested in a new beach service centre at Moose Mountain Provincial Park. Campground service centres are important amenities in provincial parks because they provide guests with clean, safe washrooms and showers.
- Boat launches at Duck Mountain Provincial Park and Regina Beach Recreation Site had additional lanes added.

## **Enhance the Saskatchewan Provincial Parks visitor program and service delivery, and the range of attractions available to maintain high visitor satisfaction and increased visitation.**

### **Key Actions and Results**

#### ***Continue consultations and planning to fulfill government's commitment to designate new provincial parks.***

- In the Porcupine Hills area, the province has identified an opportunity to establish a new provincial park, with the objective to conserve park land for the use and enjoyment of all people in Saskatchewan.
- First-Nation-led engagement process has brought all stakeholders into a single consultation process and has resulted in improved understanding of the broad spectrum of interests involved in designation of the new park and is establishing priorities for issue resolution as this process continues through 2016-17. The Ministry is committed to full consultation to ensure any changes are in the public's interest.

#### ***Assess the performance of the 2015 campsite reservation system enhancements and continue to improve customer experience.***

- The launch of the 2015 campsite reservation season was an improved experience for customers from previous years. The number of reservations booked during this

period increased over 2014 by 15.6 per cent and the number of nights booked increased by nine per cent. The launch period was increased from five days to ten days and a queueing system added to manage the flow of customers into the reservations system to allow the system to process reservations without system overloads. All customers waiting in the queue at 7 am were in the reservation system and either reserving or through the booking process within 20 minutes of opening on each day. Post-launch inquiries were estimated to be at least 50 per cent lower than previous years with the majority being inquiry-related rather than complaints. A number of positive comments by customers were received.

#### ***Implement targeted recreational, learning and promotional programs and services directed at returning and new visitors including new Canadians, First Nations and Métis, and youth:***

- Over the summer 2015, at least 50 Cultural Access Passes (passes to various provincial attractions that are provided to new Canadian citizens in their first year of citizenship), were used for free vehicle entry into the parks. Due to this positive response, plans are in place to continue and hopefully expand the program.
- The Learn to Camp program, aimed at first time campers to teach essential camping skills, was successfully launched at three park locations: Pike Lake, Echo Valley and Good Spirit Provincial Parks. The Ministry is continuing the program in 2016 at the same three locations. Demand for the program exceeded our expectations and most participants indicated they were confident to camp on their own following participation in the program.
- In partnership with Prairie Spirit Connection and the Ministry of Social Services, "cultural camps" at Buffalo Pound Provincial Park were expanded and included opportunities for foster families to camp together and forge family bonds from across the province. Ministry staff assisted in the planning of the Foster Family cultural camp and delivered programming on Aboriginal heritage and natural history education programs to the participants.

***Maintain and continue to develop programming to improve access and enjoyment of parks in partnership with the recreation, arts and cultural communities:***

- Opportunities were expanded to enjoy recreation, skill development and events at provincial parks including ultimate frisbee, water safety with the Lifesaving Society, and performance and skill development with Embrace Theatre. Also, in partnership with Canoe Kayak Saskatchewan, Saskatchewan Volleyball and Saskatchewan Cycling, skill sessions were delivered in canoeing and kayaking, beach volleyball and mountain biking at several provincial parks.

***Assess and revitalize the provincial parks trail network through creation of a multi-use trail master plan for Moose Mountain Provincial Park, and upgrades and extensions to trails in Saskatchewan Landing, Buffalo Pound, Candle Lake and Blackstrap Provincial Parks.***

- Thanks to funding partners such as Saskatchewan All-Terrain Vehicle Association, Moose Mountain Provincial Park All-Terrain Vehicle trails, Wascana Valley Natural Recreation Site mountain biking/multi-use trails, and the Moose Jaw Paver Bicycling Club, Buffalo Pound Provincial Park multi-use trails were undertaken.
- Work improved the cross-park pathway at Blackstrap Provincial Park and the long-distance backcountry 'Boreal Trail' in Meadow Lake Provincial Park.

***Partner with the private sector to facilitate development of new long-term seasonal camping opportunities in provincial parks.***

- Partnering with the private sector to build park infrastructure that meets the demands of customers is an economic way to improve visitors' experiences.
- A new privately operated long-term seasonal campground in Blackstrap Provincial Park was established under a commercial lease agreement with the Ministry. The new (29 site) campground opened in the summer of 2015.
- Development and lease agreements were finalized which will see the expansion of a second long-term seasonal campground (126 site) at Saskatchewan Landing Provincial Park, opening in 2016.

***Partner with the private sector to facilitate renewal / expansion of marina facilities in provincial parks.***

- The marina renewal at Elbow Harbour Recreation Site was completed in 2015, in partnership with private operators. At the same time, the Ministry also added a second boat launch at Elbow Harbour, doubling the current launching capacity to meet the high demand during peak boating season.
- In 2015, the beach retaining wall at Saskatchewan Landing Provincial Park was repaired and upgraded by the Ministry. The original wall was constructed in the 1970s and after 40 years of high winds and varying water levels, the wall needed stabilizing. Walkways and guardrails were installed and improved access to the beach area.

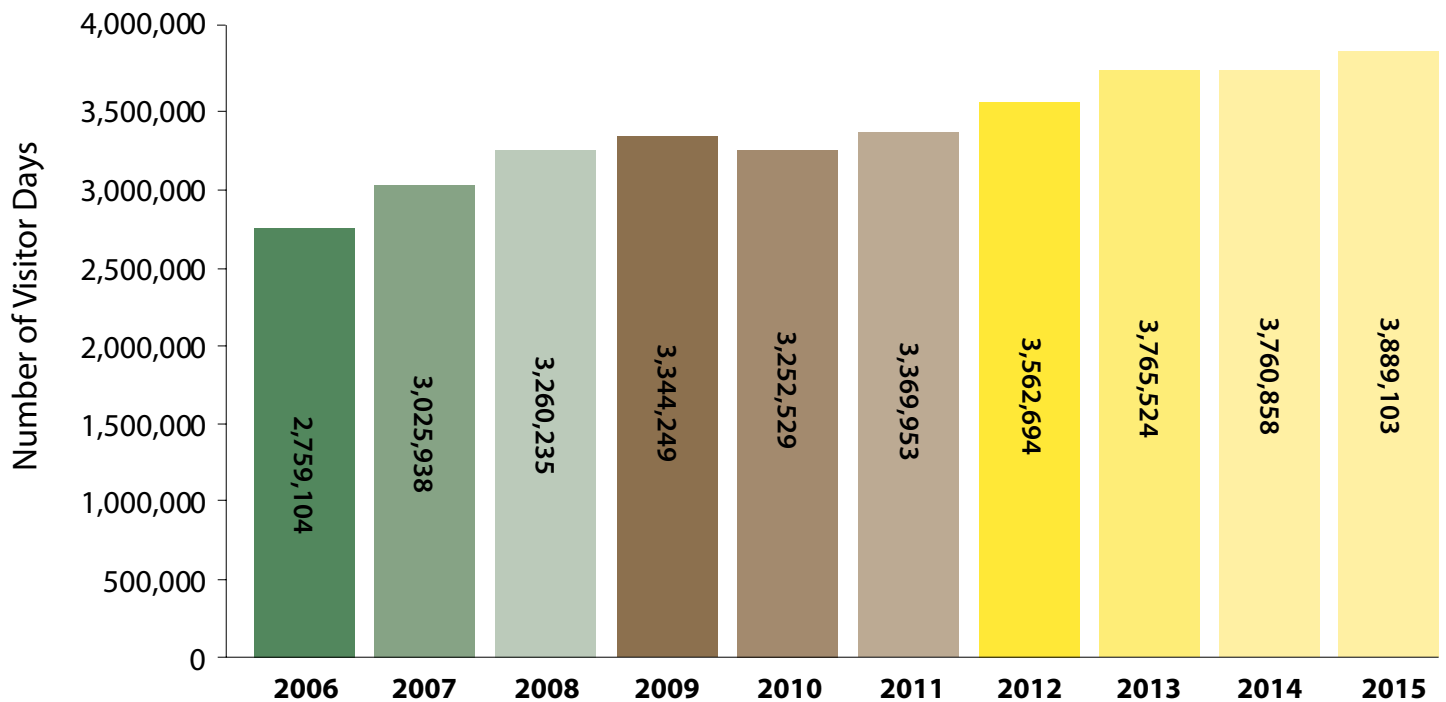
***Work with Tourism Saskatchewan and other ministries to identify recreation opportunities along Lake Diefenbaker to increase tourism and economic opportunities in the area.***

- The Ministry is leading an inter-ministry team (Ministries of Agriculture, Environment, Highways and Infrastructure, Government Relations, Water Security Agency, Tourism Saskatchewan) to continue to enhance recreation opportunities in the vicinity of Lake Diefenbaker. This work has focused on creating a tourism plan for the north-east portion of the Lake, highway improvements that would improve access and exploring the potential for new cottage subdivisions in the area.
- In 2015-16, the Ministry has facilitated increased cottage subdivision opportunities around Lake Diefenbaker by:
  - Transferring land at Danielson Provincial Park to allow for private cottage subdivision development – Park land was sold to a private developer, and replacement land of higher ecological integrity was brought into the park;
  - Allowing new private development at the Garth Subdivision, between Elbow and Danielson; and,
  - Expanding the cottage area at the resort village of Beaver Flats.

## Progress in 2015-16

### Performance Measures

Number of Visitors Days in Saskatchewan Provincial Parks



Source: PCS Summer Visitation and Outdoor Recreation Statistical Report

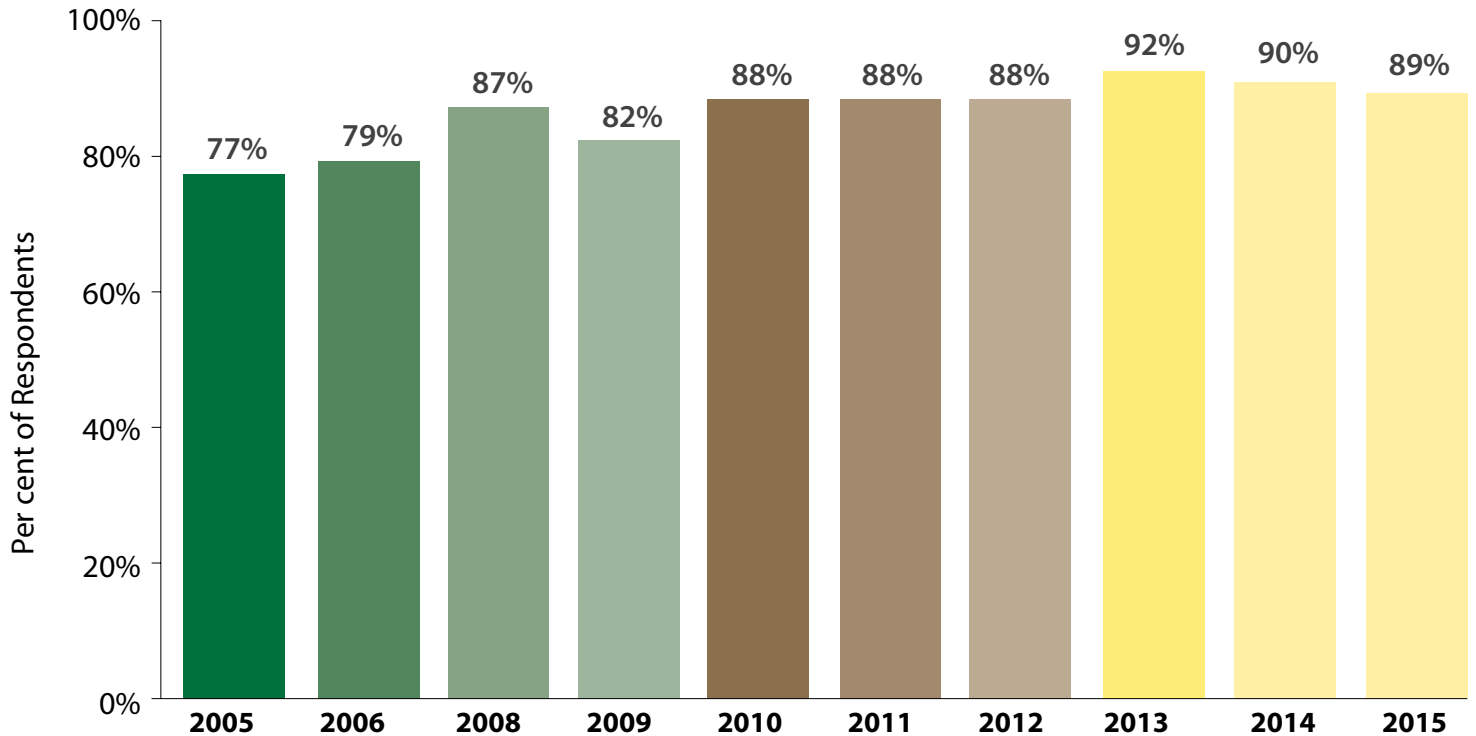
Saskatchewan's provincial parks set another record for visitation in 2015 and for the ninth year in a row, there were more than three million visitor days at provincial parks. The high visitation in 2015 is due, in part, to the additional funding that has been strategically invested in new facilities, facility upgrades, and campsite electrification (new and upgraded) beginning in 2008-09. This is a measure of park access and popularity during the summer.

Tracking this measure helps the Ministry evaluate the success of its marketing, policies and related programs. This measure is a conservative estimate as data is not collected in fall and winter or in many smaller park sites in the summer.

## Progress in 2015-16

### Performance Measures

Satisfaction with Saskatchewan Provincial Park Visit



Source: 2003-06: Saskatchewan Omnibus Poll; 2008 and 2012-15: Park Camper Survey  
2009-2011: SK Tourism Post-Campaign Survey by Fast Consulting for Tourism SK  
Note: No data was collected in 2007

This measure is an indicator of visitor satisfaction with the programs, services and facilities offered at our provincial parks. The Ministry has been investing in Saskatchewan's provincial parks in order to offer a better camping experience. The improvements include the launch of a new online

booking system, adding electricity to nearly 1,800 campsites, building new service centres, change houses and boat launches. Visitor satisfaction remained high in 2015 with 89 per cent of visitors indicating satisfaction with their visit to a provincial park.

## Government Goal:

Sustaining growth and opportunities for Saskatchewan people

Meeting the challenges of growth

Securing a better quality of life for all Saskatchewan people

Delivering responsive and responsible government

## Ministry Goal

**Strengthen the protection and management of Saskatchewan parklands, heritage and cultural assets through conservation, regulation and stewardship.**

**To further protect and manage Saskatchewan's cultural heritage, increase the number of Provincial Heritage Properties, recorded archaeological sites, and management plans for Crown property.**

### Key Actions and Results

*Bring forward nominations for Provincial Heritage Property designation for consideration by the Minister's Heritage Property Advisory Committee.*

- The Ministry has developed a short list of built-heritage properties to further research for potential Provincial Heritage Property designation. In addition, discussions and research continue with the local board for the Rural Municipality of Mountain View for the municipally recognized Herschel Petroglyphs. Support and advice is also being provided to the owners of the Reesor Ranch in the Rural Municipality of Maple Creek.

*Identify and document known rock art sites located on provincial park lands.*

- Site visits have been completed for the southern parklands which are located south of Prince Albert. All field notes which identify gaps in information, site forms, and future conservation work required for preservation have been completed for each site. Cultural protected area assessments will be completed in 2016.

*Provide archaeological heritage and built heritage regulatory services to assist property owners and land resource developers in project review, approval and conservation efforts.*

- A total of 2,615 proposed development projects were reviewed to determine heritage resource impact or other regulatory requirements, and 179 investigation permits were issued for impact assessment and scientific research. Officials also field-inspected 17 proposed land developments or Crown land dispositions and regularly responded to newly reported archaeological discoveries.
- The Ministry continued to provide built-heritage regulatory and advisory services for owners of provincially designated and non-designated heritage properties, and processed seven heritage property alteration applications. Projects included the Estevan Court House, Melville City Hall, Weyburn Security Bank and the former Moose Jaw Normal School (PolyTechnic).

*Update and develop the Provincial Archaeological Site Inventory and the Saskatchewan Register of Heritage Property, for property management, land use planning, education and research.*

- Ministry officials added 193 new Saskatchewan Archaeological Resource Records to the Provincial Archaeological Site Inventory and updated 195 additional records with new information. Officials also processed 718 requests for inventory-related information, and continued with on-going maintenance and development of the automated inventory database and Geographic Information Mapping System.

- Ministry officials added 20 new records to the Saskatchewan Register of Heritage Property and updated several existing records to ensure consistent and accurate information was being presented. Officials have also begun inserting geographical coordinates into the record for each designated heritage property so they can be displayed on the Register's mapping feature; work which will continue in 2016-17.

***Provide advisory services to assist communities in protecting and conserving local heritage assets.***

- Officials responded to 368 inquiries from municipal governments, property owners and other citizens regarding heritage property designation and the conservation of built heritage resources. The Heritage Conservation Branch also hosted 208 representatives from municipal governments, local Main Street Saskatchewan organizations and provincial culture and heritage groups at seven technical workshops and conferences. Topics included developing local conservation standards, providing in-community heritage conservation training and advice sessions.
- Officials continued to provide heritage advisory services to local organizations and property owners in six accredited-level Main Street Saskatchewan communities: Maple Creek, Swift Current, Melfort, Humboldt, Spiritwood and Prince Albert.

***Work with the Prince's Charities Canada through the Saskatchewan Heritage Foundation (SHF) to create a new, sustainable, long-term conservation plan for Claybank Brick Plant National Historic Site of Canada.***

- The SHF has partnered with the Prince's Charities Canada in an effort to conserve this unique heritage site. The SHF participated in three community meetings in Avonlea, Regina and Moose Jaw to generate ideas for the conservation plan for the site.
- Representatives of the Prince's Regeneration Trust and the Prince's Charities Canada held town hall and one-on-one meetings with stakeholders, as well as members of the business and philanthropic communities to also contribute to the development of a conservation plan.

**Provincial heritage collections and assets controlled and maintained by the Ministry will be preserved, maintained, interpreted and documented to museum and / or conservation standards.**

**Key Actions and Results**

***Initiate projects in provincial parks that increase the preservation of heritage collections and assets.***

- Although plans were in place to focus on specific aspects of preservation, no new projects were initiated in 2015-16. This was due to changing priorities and loss of staff expertise in this area.

***Through the Royal Saskatchewan Museum (RSM), continue to house, develop and conserve provincial heritage collections, and increase understanding of Saskatchewan's natural and cultural history.***

- The RSM improved their storage for several collections to ensure they remain well-preserved and pest-free into the future. The preservation of these collections is important because they represent the province's natural heritage and they provide scientists with valuable research data.
- Research by RSM curators is increasing our understanding of bees, non-bee pollinators, turtles in Wascana Lake, Saskatchewan snakes, small mammal distributions, dinosaurs, fossil environments using amber deposits, and woolly mammoths. Research on bees and amber is attracting international collaborators, furthering the RSM's goal of being a Centre of Excellence in these research areas.

***Continue preservation and enhancement work at the Holy Trinity Anglican Church in Lac La Ronge Provincial Park and the stockade bastions at Fort Carlton Provincial Park.***

- Parks continues to monitor and address the sustainability of the Holy Trinity Anglican Church as a key heritage asset to the people of Saskatchewan. Efforts also continue at Fort Carlton Provincial Park and things are moving ahead of schedule with restoration of two bastions, corner towers in the fort walls, completed.

## Protect the health of the ecosystem in Saskatchewan Provincial Parks.

### Key Actions and Results

*Control the invasion of exotic invasive plant species in grassland and forested provincial parks, specifically addressing leafy spurge, crested wheatgrass, smooth brome grass and caragana invasions.*

- In 2015, invasive exotic plant species control programs were conducted at Fort Carlton Provincial Park, White Butte Trails Recreation Site, Douglas Provincial Park, Buffalo Pound Provincial Park, Saskatchewan Landing Provincial Park, Narrow Hills Provincial Park, Candle Lake Provincial Park, Matador Grassland, Cypress Hills Interprovincial Park (West Block), and Pike Lake and Meadow Lake Provincial Parks.
- The result of this work is a significant reduction in leafy spurge (invasive alien plant), at White Butte Trails Recreation Site, and Buffalo Pound, Douglas, Saskatchewan Landing and Narrow Hills Provincial Parks. Although less effective in other areas, it is hoped that native species will re-populate these areas.

*Monitor park forest insect and disease occurrences and apply treatments to core and backcountry areas to reduce impacts to visitor experience and public safety.*

- In 2015, the forest tent caterpillar aerial spray program was completed in seven provincial parks: Blackstrap Provincial Park, Good Spirit Provincial Park, The Battlefords Provincial Park, Greenwater Lake Provincial Park, Great Blue Heron Provincial Park, Crooked Lake Provincial Park and Duck Mountain Provincial Park for a total area sprayed of 1,922 hectares.

- Dutch Elm Disease infected trees were removed from Echo Valley Provincial Park, Katepwa Point Provincial Park, Rowan's Ravine Provincial Park and Regina Beach Recreation Site. Mountain Pine Beetle infected trees were felled and burned in Cypress Hills Interprovincial Park during snow cover season to allow for safe burning.

*Implement the third year of a 10 year grassland restoration project in Saskatchewan Landing Provincial Park.*

- This restoration project has been completed. Fields have been planted with green cover crops and sprayed for invasive exotic plant species in order to remove crested wheat seed bank, and will be reseeded in the future with native grass.

*Work with the forestry industry to implement the second year of the Duck Mountain Provincial Park 10 year Aspen Forest Regeneration Strategy to renew the park's northern aspen forests.*

- In 2015-16, the Ministry renewed their logging agreement with Weyerhaeuser to continue to improve the health of the forest.

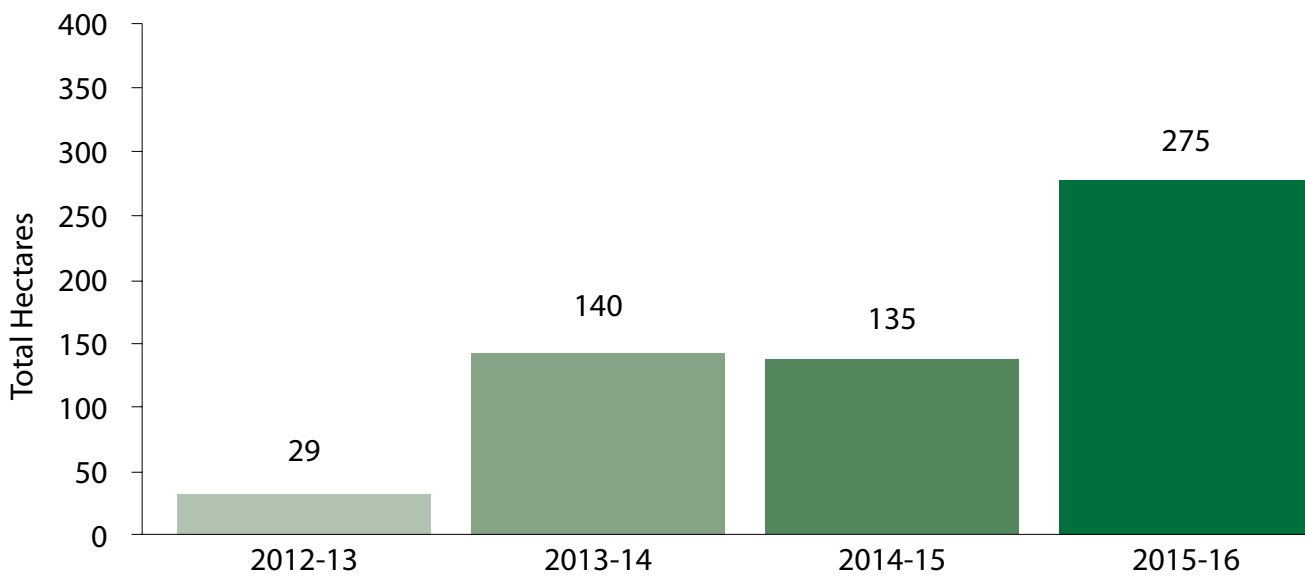
*Continue to monitor tree health in park core areas and remove all at-risk trees identified as part of a yearly maintenance program to ensure visitor safety.*

- In 2015-16, 20 parks locations were assessed, trees removed and proper pruning technique workshops were held with park operations staff.

## Progress in 2015-16

### Performance Measures

Total Hectares Treated with Biological, Chemical, Mechanical or Other Controls Including the Use of Prescribed Burns



Source: Landscape and Protection Unit

In 2015-16, the Ministry treated 275 hectares to control the invasion of exotic plant species, using primarily chemical treatments and prescribed burns.

*The Parks Act* states that the Ministry is to maintain natural prehistoric and historic resources on park land (Section 3). Park grasslands are failing to naturally rejuvenate themselves due to human disruption of natural disturbance regimes. Invasive exotic species are displacing native prairie species and threatening the ecological health of park ecosystems.

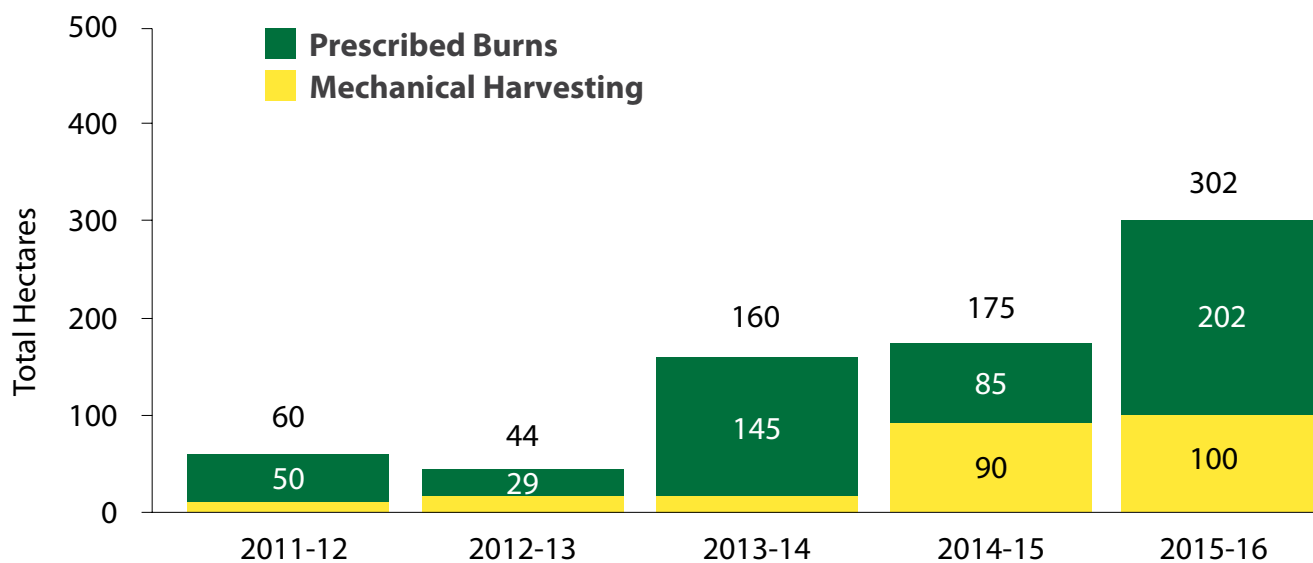
The Ministry employs a combination of methods to control and manage invasive species in provincial parks, including biological, chemical, mechanical and other controls such as prescribed burns. This measure includes the total number of hectares per year that have been treated using these methods to control invasive species.



## Progress in 2015-16

### Performance Measures

Total Number of Forested Hectares Treated by Either Mechanical Harvesting or Prescribed Burns Per Year For Each of the Five Natural Environment Parks



Source: Landscape and Protection Unit

In 2015-16, the Ministry treated a total of 302 forested hectares of park land using both mechanical harvesting and prescribed burns.

Park forests are failing to naturally rejuvenate due to human disruption of natural disturbance regimes. Increased insect and disease outbreaks in old forests threaten public safety,

degrade aesthetics and raise wildfire risk. Over mature trees in the core areas of parks are also creating public safety risks. The Ministry utilizes prescribed burning in conjunction with the ecological harvest of forests, which emulate natural disturbance events, in order to manage the ecosystem on park lands.

## Government Goal:

Sustaining growth and opportunities for Saskatchewan people

Meeting the challenges of growth

Securing a better quality of life for all Saskatchewan people

Delivering responsive and responsible government

## Ministry Goal

**Support Saskatchewan's economic growth by strengthening the cultural industries and leveraging private sector investments in arts, culture and heritage.**

**Increase the impact of the arts, culture, and heritage sectors and creative industries on Saskatchewan's Gross Domestic Product.**

### Key Actions and Results

*Work with Creative Saskatchewan to grow a creative economy through the provincial investment of \$7.69M in the commercialization of creative products and bringing Saskatchewan's creative talent to market through grant programs.*

- Stakeholder consultations on client service levels led to the implementation by Creative Saskatchewan of several recommendations including a new communications plan, a new website and an online application system, a review of program policies and procedures, and a review of board governance. The consultation report is available at <http://www.saskatchewan.ca/government/public-consultations/creative-saskatchewan-review>.
- Creative Saskatchewan partnered with and invested in creative industry associations including: Saskatchewan Media Production Industry Association, SaskGalleries, Saskatchewan Interactive Media Association, SaskBooks, Saskatchewan Craft Council and SaskMusic to establish sector development plans to guide future investment decisions by Creative Saskatchewan.
- For more detailed information please visit Creative Saskatchewan's website at [www.creativesask.ca](http://www.creativesask.ca).

*Work with the Saskatchewan Arts Board to grow the arts community through the investment of \$6.9M in support of the arts, artists and arts organizations to enrich community well-being, creativity, diversity and prosperity.*

- After extensive consultations with the arts community and partners, the Board of Directors for the Saskatchewan Arts Board released a strategic plan which outlines plans to streamline funding programs.
- For more information on activities of the Saskatchewan Arts Board in 2015-16, see their annual report: [www.saskartsboard.ca](http://www.saskartsboard.ca).

*Develop and implement a long-term strategy for the Canada-Saskatchewan Production Studio that provides needed supports for Saskatchewan's creative sector.*

- The Ministry engaged stakeholders through an online survey and focus groups to contribute to the development of a new strategic facility use plan for the Soundstage. A consultation summary report has been completed and work continues on a strategy with Creative Saskatchewan, creative industries and the live performing arts community to realize the full potential of the space.

***Invest in the conservation of heritage resources through the Saskatchewan Heritage Foundation (SHF).***

- Increase capacity of property owners to leverage private sector investment in the rehabilitation of heritage property through the introduction of a new one-time grant for non-designated commercial heritage properties at the SHF.
- The SHF has introduced a new one-time grant program providing \$10,000 to assist with the restoration of locally significant commercial buildings that do not hold designation as municipal heritage property (MHP) or provincial heritage property (PHP). The program offers funding to help conserve heritage properties without official designation status. In 2015-16, 11 applications were received, and two were awarded grants.
- For more information about these programs and the Saskatchewan Heritage Foundation, please visit [www.pcs.gov.sk.ca/SHF](http://www.pcs.gov.sk.ca/SHF).

***Expand participation in the Main Street Saskatchewan Program to support revitalization of historic commercial downtowns.***

- The Main Street Saskatchewan Program (MSSP) has two tiers of participation. The top "Accredited" tier is for communities that commit to meeting the program's highest performance standards. Communities in this tier are eligible for the full package of program services and benefits. Communities that want to start using the Main Street approach, but are not ready to commit to the full accredited standards, can enter the program at the lower "Affiliate" level, and receive a reduced level of services. Up to two Accredited communities are admitted annually through a competitive application process. Any number of Affiliates can be admitted, provided they meet certain minimum eligibility requirements.

- In August 2015, Humboldt and Spiritwood moving from Affiliate to Accredited status showed that the MSSP's tiered structure is fulfilling its objective of enabling communities at differing stages of readiness to enter the program and grow within it. The admission of the three new Affiliate communities (City of North Battleford and Towns of Carrot River and Redvers) showed growing interest in the MSSP, extended the program's reach to new areas of the province and demonstrated the program's appeal to communities of all sizes.
- In addition to providing training and coaching support, the program awarded \$285,285 in matched grant funding to local organizations and property owners to build local organizational capacity and rehabilitate buildings in Accredited-level communities.
- As of March 31, 2016, there were 15 communities participating in the Main Street Saskatchewan Program. SaskCulture Inc. administers the Main Street Saskatchewan Grant Program through a partnership with the Ministry of Parks, Culture and Sport. To learn more about Main Street Saskatchewan, please visit [www.pcs.gov.sk.ca/MainStreet](http://www.pcs.gov.sk.ca/MainStreet).

## Government Goal:

Sustaining growth and opportunities for Saskatchewan people

Meeting the challenges of growth

Securing a better quality of life for all Saskatchewan people

Delivering responsive and responsible government

## Ministry Goal

**Improve Saskatchewan's quality of life by increasing participation in arts, sport, recreation, and culture and heritage activities.**

**Increase participation in sport, culture and recreation activities, especially by children and youth.**

### Key Actions and Results

*Target investments in leadership and training opportunities through Saskatchewan Parks and Recreation Association to lead and engage children and youth in sport, recreation and cultural activities.*

- A grant of \$49,500 was provided to Saskatchewan Parks and Recreation Association (SPRA) to support projects in the after school time period. The investment will refresh resources and link communities to share best practices through a regional symposium in 2016-17.
- For more information on SPRA, please visit [www.spra.sk.ca](http://www.spra.sk.ca).

*Renew the Canada-Saskatchewan sport bilateral agreement to:*

- Address barriers to children and youth participation in sport activities; and,
- SaskSport continues to fund the Dreambrokers program with lottery funding and bilateral funding. Dreambrokers employs up to 13 individuals to work within 22 schools to ensure the sustained involvement and participation of over 4,000 under-served children and youth to access existing recreational, cultural, sports, social and arts opportunities in their communities to ensure they become healthy and active.

- Support opportunities for persons from under-represented / marginalized populations to participate in sport as athletes, coaches, officials, and volunteer leaders.
- The Aboriginal Community Sport Development Program provides grant funding to community organizations to increase the development of new sport opportunities for children and youth within the indigenous community, specifically in urban, rural, on-reserve, isolated and northern communities.
- The Aboriginal Coaches and Officials Program develops and trains coaches and officials at the FUNdamentals, Learn-to-Train and Train-to-Train stages of the Canadian Sport for Life Long Term Athlete Development model using curriculum such as the National Coaching Certification Program (NCCP), the Aboriginal Coaching Module (ACM), sport-specific coaches and officials training. SaskSport invested over \$1.2 million from the Saskatchewan Lottery Trust Fund in addition to the \$303,000 of federal support in the above listed initiatives through a partnership agreement with the Ministry.
- The bilateral agreement was renewed. Sport Canada has committed \$1,213,212 over the next four years (2015-2019).
- For more information on Sport Canada, please visit [www.canada.pch.gc.ca](http://www.canada.pch.gc.ca).

***Based on the endorsement of the Framework for Recreation in Canada 2015, the Ministry will collaborate with recreation sector partners on next steps for introducing the framework into Saskatchewan.***

- The Ministry continued work with SPRA and other partners to develop a Saskatchewan strategy to enhance recreation opportunities in the province. Through consultation with partner ministries and sector partners, the Ministry has identified seven priorities for action over the next five years to advance the Framework for Recreation in Saskatchewan. The Ministry is working on

collaborative strategies focused on reducing barriers to participation in recreation opportunities, promotion of physical literacy and physical activity, and connecting people to nature. The Ministry, through programming at provincial parks such as Learn To Camp, continues to offer and enhance opportunities that work toward inclusion and access priorities of the Framework.

***Partner with other ministries and stakeholders to explore options to develop an online resource for workplace wellness.***

- In September 2015, partner ministries and stakeholders worked together to host the first Workplace Wellness Symposium and have begun research and development for an online Workplace Wellness resource available to all Saskatchewan workplaces. The completion and launch of this resource on the [Saskatchewan.ca](http://Saskatchewan.ca) website is expected for early 2017.

***Ensure strategic investment in arts, sport, recreation, culture and heritage activities through the Community Initiatives Fund.***

- In 2015-16, the Community Initiatives Fund (CIF) announced \$14.9 million in funding to support 774 projects across Saskatchewan. The funding is applied to small capital renovations to improve long term use of multi-purpose community facilities such as halls, recreation facilities, playgrounds, programs and events. Investment themes included childhood development, positive life choices, active living and community celebrations all which make up and improve Saskatchewan's quality of life.
- For more information, please visit the CIF website for their annual report: [www.cifsask.org](http://www.cifsask.org).

***Direct an estimated \$1.8M in snowmobile registrations to the Saskatchewan Snowmobile Trail Fund for ongoing safety programs, improved maintenance and operation of trails throughout the province.***

- In 2015-16, nearly \$1.4 million from snowmobile registration fees was directed to the Saskatchewan Snowmobile Trail Fund to support safety programs and assist local clubs to maintain nearly 10,000 kilometers of snowmobile trails. The \$1.4 million amount is a reduction from the budgeted \$1.8 million due to less than expected snowmobile registrations.

***Provide financial support of \$2,500 per ice surface to skating rinks and curling rinks in Saskatchewan through the Community Rink Affordability Grant (CRAG).***

- During the 2015-16 fiscal year, the CRAG supported 637 ice surfaces for a total of \$1,592,500. Local rinks are important gathering places for many people across the province. This financial support helps ensure that many community rinks remain open to the public. The CRAG provides funding to Saskatchewan's community-owned indoor skating and curling rinks. Communities, schools, non-profits and First Nations are eligible to apply to the program. The grant helps support operations and minor capital upgrades.
- The SPRA has administered and delivered the program on behalf of the Ministry since its inception and did so again in 2015.

***Enhance visitor experience and increase visitation at Government House, the RSM and the T.rex Discovery Centre.***

**Key Actions and Results**

***Renew exhibits and visitor programs at Government House, including the family festive Old-Fashioned Victorian Christmas, to continue to attract Saskatchewan residents, First Nations and Métis, new Canadians, children and youth.***

- In 2015, the Old-Fashioned Victorian Christmas event at Government House, which featured Christmas caroling, cookie decorating, Christmas family photos and horse-drawn sleigh rides, was offered over two nights in response to increased attendance the previous year. In total, 2,640 visitors attended over the two nights, an increase of more than 40 per cent over 2014.
- In 2015, the "Bump in the Night" event at Government House featured a magician in the ballroom, Judith Silverthorne reading from her popular book, *Ghosts of Government House*, a scavenger hunt in the museum and a variety of Victorian-themed crafts. In total, 1,076 visitors attended.

***Introduce new temporary exhibits at the RSM, exhibit upgrades to the T.rex Discovery Centre, and continue to tour travelling exhibits to Saskatchewan communities.***

- Two new exhibits were introduced in the temporary exhibit space in Regina: “Insects, Flowers and Food” opened in May 2015, and the Saskatchewan Fossil Campaign opened in November 2015.
- The *Nottingham Collection* was exhibited in the First Nations Gallery and features intricate First Nations beadwork collected by Ann Alice Nottingham from the early 1900’s through the early 1940’s. In 2011, 28 pieces of the Nottingham Collection were donated to the RSM and nine of the pieces were on display. The pieces originate from First Nations reserves near Markinch and Raymore, just north of Regina.
- At the T.rex Discovery Centre, enhancements were made to the Scotty exhibit, a dinosaur postage stamp mural was installed and the meteorite exhibit was displayed over the summer.
- The travelling exhibits (“Hunter of the Prairie Sea”, “Scotty and his World” and “Big Bert the fossil crocodile”) were hosted by the Unity Museum, Star City Heritage Museum, Swift Current Museum and the Regina Airport.

***Develop educational and public programming in support of temporary exhibits at the RSM including providing French language gallery worksheets for students.***

- The Pollination Station family program was developed to augment the “Insects, Flowers and Food” exhibit. French language resources were developed to support the Saskatchewan Fossil Campaign 2016 exhibit and the French language version of the Earth Sciences Gallery Guide was made available online. A new biodiversity program, *Slice of Life*, which utilized the content of the permanent galleries, was piloted.

***Create and deliver bilingual live history performances, “Capital Vignettes”, as a collaborative project for Government House, the Saskatchewan Legislative Building and community partners.***

- The History Alive! Vignettes for the 2015 season ran from July 5 to August 18 inclusive with two performance days offered each week at Government House, and one performance day weekly at the Legislative Building. The performances reimagined life at Government House from 1898-1910 during the time Saskatchewan became a province, with performances offered at the Legislative Building, highlighting important historical moments that unfolded during the early days of the Saskatchewan Legislature.

**Increase participation in programs and events offered by the Provincial Capital Commission.**

### **Key Actions and Results**

***Initiate work to revitalize Government House in preparation for its 125th Anniversary in 2016.***

- Plans for the Government House 125th Anniversary continued throughout the year. Two anniversary partnerships were successfully launched in late 2015 to celebrate this significant anniversary in 2016: launching a specially blended Anniversary tea and creating a custom designed, limited edition Crown Pendant. For more information, visit [www.governmenthouse.gov.sk.ca](http://www.governmenthouse.gov.sk.ca).
- New exhibits and public programming will continue to be featured in 2016 celebratory events that will engage the public during the anniversary year. Revitalization of the Edwardian Gardens has started with the Provincial Capital Commission contracting landscape architects to create a plan that helps celebrate the Government House 125th Anniversary.

***Deliver the Youth Mentorship Program to bring northern high school students to Regina to learn about democracy, governance and provincial history.***

- The Charles Knight Youth Mentorship Program is hosted by the Provincial Capital Commission, with support from the Ministry of Education. This is the sixth time the program has been offered. 32 high school students from northern Saskatchewan travelled to Regina to learn about government, the history of the province and career opportunities in Saskatchewan.

***Provide grade eight students across the province an opportunity to visit and tour the Saskatchewan Legislative Building through participation in "A Day in the Legislative Assembly", a unique experience learning about the democratic system.***

- *A Day in the Legislative Assembly* is now offered twice a year by the Provincial Capital Commission, typically in early spring and autumn. It supports the mandate to educate youth about the history and governance of the province while inspiring pride in Saskatchewan's Capital City.
- In 2015-16, Grade seven and eight students from Coronach School and Grade eight students from St. Michael School in Moose Jaw visited the Saskatchewan Legislative Building to learn about the province's history and democratic process, by getting an up-close look at how government works.

***Collaborate with Saskatchewan Archives to develop Phase Two of the First World War commemorative exhibit at the Saskatchewan Legislative Building.***

- In August 2015, the Provincial Archives of Saskatchewan launched the second in a series of video exhibits commemorating Saskatchewan's involvement in the First World War. "From the Prairies to the Trenches - From Salisbury Plain to Flanders Fields, November 1914 - December 1915" explores the events of the day that were taking place at the front and at home in Saskatchewan.

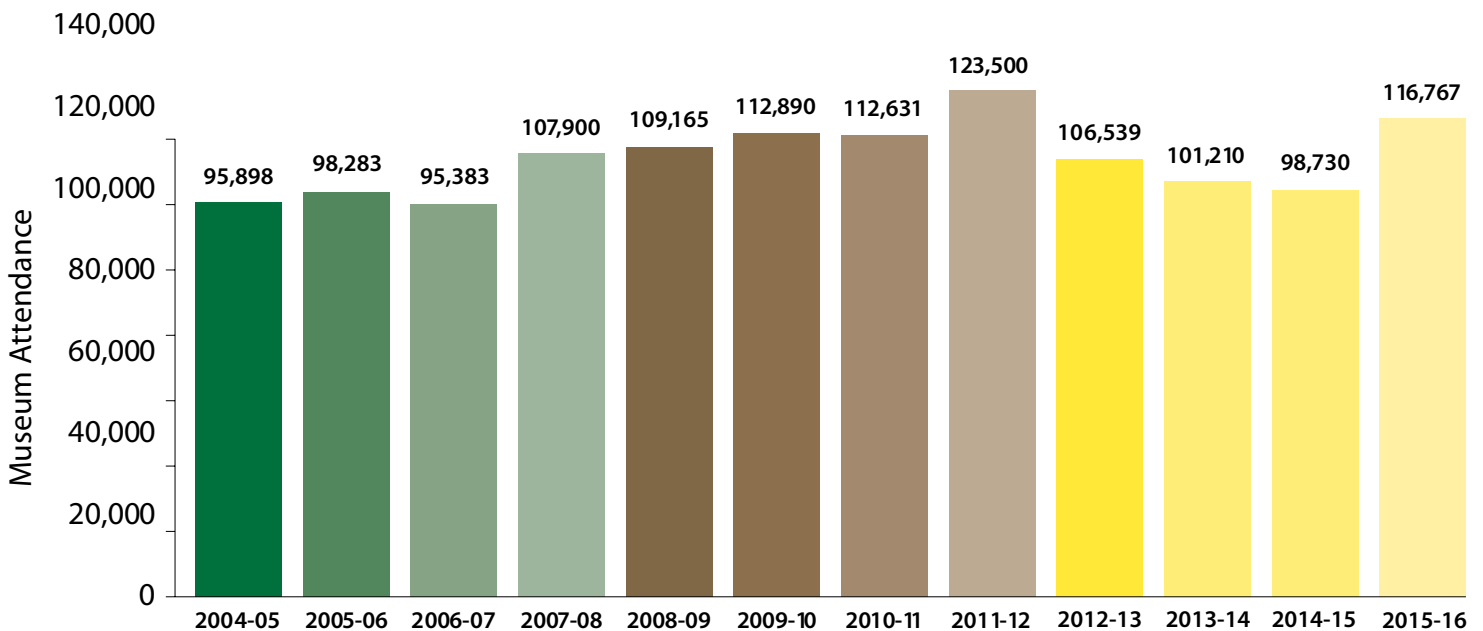
***Develop the plan and deliver key initiatives on Saskatchewan's Road to 2017 in celebration of Canada's 150th Anniversary.***

- As part of its annual support for the celebration of Canada Day in the Capital City, the Provincial Capital Commission (PCC) hosts the opening ceremonies in front of the Provincial Legislative Building. On Canada Day 2015, the PCC invited members of the public to participate in Regina's first ever living flag event. More than 500 participants formed the shape of our nation's flag on the west lawn of the Legislative Building. The special event also marked the 50th anniversary of the Canadian flag, and the hope is that it will become a popular annual event.

## Progress in 2015-16

### Performance Measures

Number of Visitors to the Royal Saskatchewan Museum



Source: Royal Saskatchewan Museum

Attendance at the RSM increased by 18 per cent from 2014-15 to 2015-16. The increase in attendance is due to a combination of increased programming, temporary exhibits, an active research and collections department and a growing social media following. Museums in Saskatchewan play a

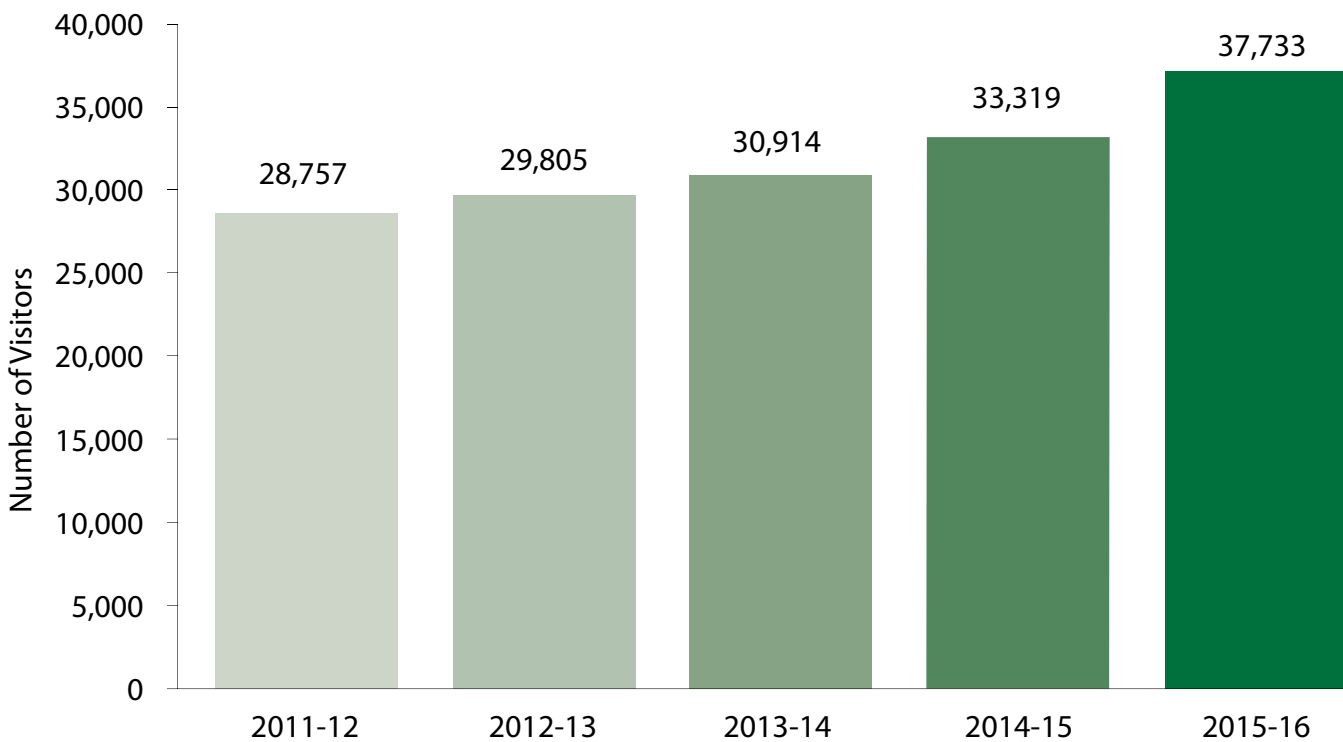
critical role in conserving and interpreting the province's natural and cultural heritage. Tracking these numbers helps the Ministry to evaluate the success of marketing, exhibits and programs for the RSM.



## Progress in 2015-16

### Performance Measures

Number of Visitors to Government House



Source: Provincial Capital Commission - Government House

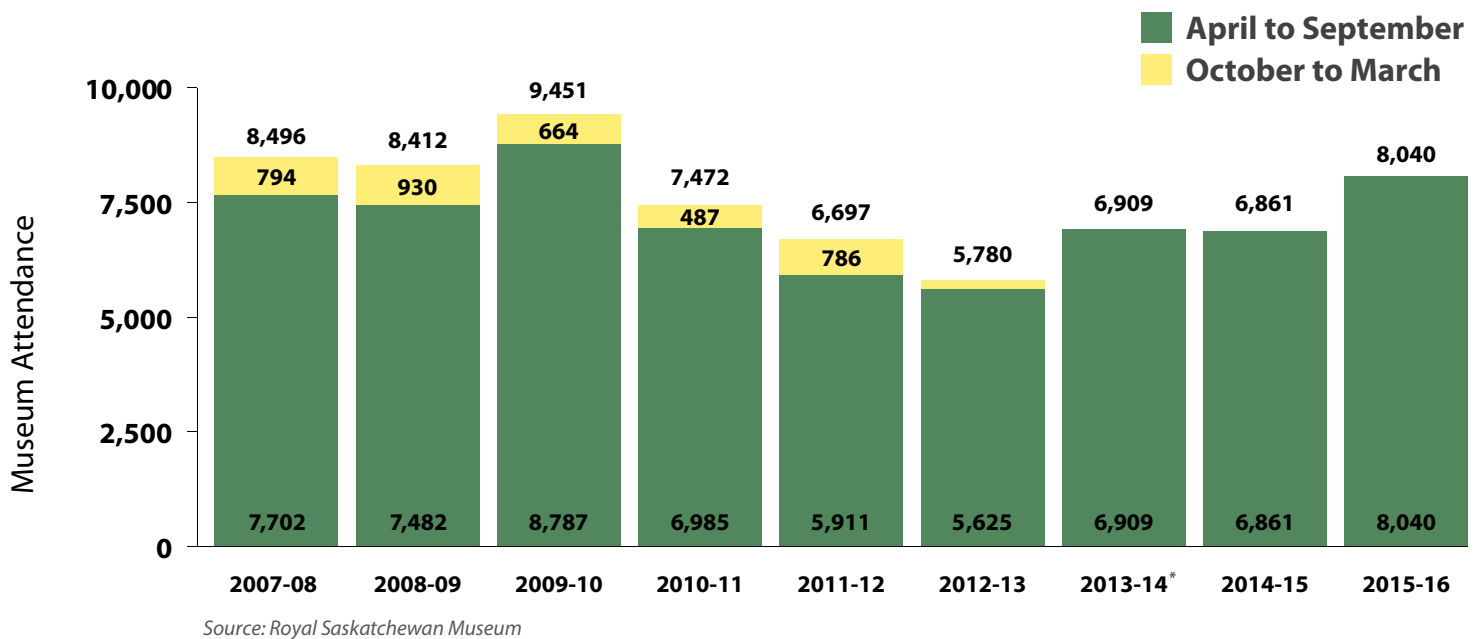
Government House is a significant historic site of the provincial capital. Built in 1891, the building first served as the official residence of the Lieutenant Governor of the North-West Territories. Restored to the period of Lieutenant Governor Amédée Forget, who was in office from 1898-1910, the museum gives visitors a glimpse of life at Government House at the turn of the 20th century. Surrounded by the

majestic 8.5 acre Edwardian Gardens, Government House is promoted as a diverse education centre and a premier tourist destination open throughout the year. Government House is both a designated National Historic Site and Provincial Heritage Property. In 2015-16, visitation increased by approximately 4,414 visitors over 2014-15, due to increasing popularity of public events and programs.

# Progress in 2015-16

## Performance Measures

Number of Visitors to the T.rex Discovery Centre



The T.rex Discovery Centre, located in Eastend, is a centre of excellence for scientific research and education in palaeontology, as well as a leading tourist attraction for the Province of Saskatchewan. The Centre is home to “Scotty,” one of Canada’s most complete Tyrannosaurus rex fossils.

In 2015-16, the facility received 8,040 visits between April and September.

Prior to 2013-14, the Centre operated year-round. The RSM has operated the Centre since 2013-14. Over the past two years visitation to the Centre has increased from April to September due in part to a marketing strategy and to the installation of the skeleton of Scotty the T.rex in March 2013. Tracking these numbers helps the Ministry evaluate the success of marketing, exhibits and programs at the T.rex Discovery Centre.

*\* The 2013-14 results have been restated to ensure consistency in data collection for 2014-15.*

# 2015-16 Financial Overview

The Ministry's appropriation for 2015-16 was \$99.463 million. Including a non-appropriated expense adjustment of \$4.096 million (less capital asset acquisitions of \$12.999 million), the Ministry's total approved expense for 2015-16 was \$90.560 million.

Total 2015-16 actual expenses were \$87.965 million, a variance of \$2.595 million from the expense estimate.

The Ministry's budgeted revenue for the 2015-16 fiscal year was \$8.2 million. The 2015-16 actual revenue was \$9.1 million, resulting in a \$0.9 million variance of actual from budget.

The Ministry's budgeted FTE's for 2015-16 were 359.7. Actual FTE utilization was 444.6.

## Summary of Expenditures

The following table outlines information on actual and budgeted expenditures by subvote and subprogram. Variance explanations are provided for all variances that are greater than 10 per cent.

(in thousands of dollars)					Notes
Subvote/ Subprogram	2014-15 Actual	2015-16 Estimate	2015-16 Actual	2015-16 Variance	
<b>Central Management and Services</b>	<b>11,548</b>	<b>11,379</b>	<b>10,978</b>	<b>(401)</b>	
Executive Management	1,392	1,121	939	(182)	<sup>1</sup>
Central Services	3,466	3,496	3,549	53	
Accommodation Services	6,642	6,714	6,442	(272)	
Minister's Salary (Statutory)	48	48	48	0	
<b>Parks</b>	<b>33,262</b>	<b>32,053</b>	<b>31,788</b>	<b>(265)</b>	
Provincial Park Programs	4,446	4,703	4,655	(48)	
Parks Capital Projects	13,271	12,999	13,092	93	
Parks Preventative Maintenance	2,976	1,607	1,297	(310)	<sup>2</sup>
Regional Parks	1,023	1,023	1,023	0	
Urban Parks	582	582	582	0	
Meewasin Valley Authority (Statutory)	740	740	740	0	
Wakamow Valley Authority (Statutory)	127	127	127	0	
Commercial Revolving Fund - Subsidy	10,097	10,272	10,272	0	
<b>Resource Stewardship and the Provincial Capital Commission</b>	<b>10,923</b>	<b>17,000</b>	<b>15,887</b>	<b>(1,113)</b>	
Operational Support	2,338	2,592	2,630	38	
Provincial Capital Commission and Government House	755	1,100	966	(134)	<sup>3</sup>
Support for Provincial Heritage and Culture	1,798	2,673	1,649	(1,024)	<sup>4</sup>
Wascana Centre Authority (Statutory)	782	782	782	0	
Wascana Centre Authority	2,836	2,836	2,836	0	

## 2015-16 Financial Overview

Royal Saskatchewan Museum	2,414	2,507	2,514	7
Saskatchewan Archives Board	0	4,510	4,510	0
<b>Regina Stadium Project</b>	<b>50,000</b>	<b>0</b>	<b>0</b>	<b>0</b>
<b>Community Engagement</b>	<b>43,508</b>	<b>39,031</b>	<b>37,954</b>	<b>(1,077)</b>
Community Sport, Culture and Recreation Programs	3,041	3,545	2,994	(551) <sup>5</sup>
Heritage Institutions and Saskatchewan Science Centre	5,415	5,415	5,415	0
Saskatchewan Arts Board	6,958	6,958	6,958	0
Community Initiatives Fund	9,099	9,239	9,322	83
Community Infrastructure	405	171	62	(109) <sup>6</sup>
Active Families Benefit	9,350	5,500	5,000	(500)
Creative Saskatchewan	6,524	7,699	7,699	0
Film Employment Tax Credit	2,212	0	0	0
Saskatchewan Heritage Foundation	504	504	504	0
<b>Total Appropriation</b>	<b>149,241</b>	<b>99,463</b>	<b>96,607</b>	<b>(2,856)</b>
Capital Asset Acquisitions	(13,048)	(12,999)	(12,836)	163
Capital Asset Amortization	3,313	4,096	4,194	98
<b>Total Expense</b>	<b>139,506</b>	<b>90,560</b>	<b>87,965</b>	<b>(2,595)</b>

### Explanations of Major Variances

1. Savings in operating expenses due to Government's direction regarding expense restraint.
2. Savings due to deferral of capital to future years.
3. Revitalization project was deferred due to Government's direction regarding expense restraint.
4. Savings due to Government's direction regarding expense restraint.
5. Savings in transfer payments for the Saskatchewan Snowmobile Fund, due to less than expected actual revenue from registrations.
6. Savings to the Building Communities Program resulting from slower than anticipated project progress.

# Revenue Statement 2015-16

## Summary of Revenues

The Ministry's actual revenue for the 2015-16 fiscal year was \$9.1 million. The 2015-16 budgeted revenue was \$8.2 million, resulting in a \$0.9 million variance of actual from budget.

The Ministry collects revenue relating to the lottery license fee, rental of the Soundstage and fees from hosting various mixed martial arts events. The Ministry also receives funding

from the Federal Government under a Federal Provincial Sport Bilateral Agreement and the Museum Assistance Program. All revenue collected is deposited in the General Revenue Fund. A summary of the Ministry's 2015-16 budgeted revenue compared to actual revenue is presented below. Variance explanations are provided for all variances that are greater than \$100,000.

Revenue Category	(in thousands of dollars)				Notes
	2014-15 Actual	2015-16 Estimate	2015-16 Actual	2015-16 Variance	
Other Own-source Revenue					
Other fees and charges	7,025	7,767	8,566	799	<sup>1</sup>
Miscellaneous	443	10	145	135	<sup>2</sup>
<b>Subtotal</b>	<b>7,468</b>	<b>7,777</b>	<b>8,711</b>	<b>934</b>	
Transfers from the Federal Government	440	395	387	(8)	
<b>TOTAL REVENUE</b>	<b>7,908</b>	<b>8,172</b>	<b>9,098</b>	<b>926</b>	

## Explanations of Major Variances

- Actual lottery sales in 2015-16 were higher than budgeted resulting in a higher lottery license fee paid to the Ministry. Revenue from the rental of the Soundstage was also higher than budgeted.
- Revenue from the Athletics Commission was higher than budgeted as well as unused grant funding from a previous fiscal year was returned in 2015-16.

# Revolving Funds

## Commercial Revolving Fund

The Commercial Revolving Fund (CRF) is the financing mechanism for collection and distribution of funds used in the operation of Saskatchewan's provincial parks, recreation sites and historic parks. The purpose of this revolving fund is to pay for activities required to support the management, development and promotion of provincial parks. The fund receives revenue from a variety of activities that take place within provincial parks and recreation sites such as camping, entry gate permits, cottage lot rentals, leased commercial facilities (stores, marinas, cabin rentals, etc.), resource use activities and other miscellaneous items. Expenditures within the CRF contribute to the operation of the provincial park system and are made to ensure safe public enjoyment of provincial parks and recreation sites.

The CRF operates under the authority of Section 18 of *The Natural Resources Act*. The Ministry of Parks, Culture and Sport administers the CRF. The CRF contains and records the direct operating revenues and expenditures associated with delivering the parks program.

The following table outlines summary information on budgeted and unaudited results for 2015-16 related to the operation of the fund. Audited Financial Statements will be available at <http://www.finance.gov.sk.ca/> under the publications section of the website.

Commercial Revolving Fund for the period ended March 31, 2016.  
(Based on unaudited figures for 2015-16)

Revenue Category	(in thousands of dollars)			
	2014-15 Actual	2015-16 Estimate	2015-16 Actual	2015-16 Variance
<b>Revenue</b>	16,696	16,716	16,940	224
<b>Expenses:</b>				
Salaries	14,922	15,050	15,249	199
Operating Expenses	11,240	11,938	12,032	94
Total Expenses	26,162	26,988	27,281	293
<b>Net Profit / (Loss)</b>	<b>(9,466)</b>	<b>(10,272)</b>	<b>(10,341)</b>	<b>(69)</b>
<b>Subsidy from the GRF</b>	<b>10,097</b>	<b>10,272</b>	<b>10,272</b>	<b>0</b>
<b>Net Profit / (Loss) after subsidy</b>	<b>631</b>	<b>0</b>	<b>(69)</b>	<b>0</b>

## For More Information

### Ministry Contact Information:

1st Floor, 3211 Albert Street

Regina SK S4S 5W6

(306) 787-5729

### Ministry Websites:

Parks, Culture and Sport

[www.saskatchewan.ca](http://www.saskatchewan.ca)

Provincial Capital Commission

[www.opcc.gov.sk.ca](http://www.opcc.gov.sk.ca)

Government House

[www.governmenthouse.gov.sk.ca](http://www.governmenthouse.gov.sk.ca)

Royal Saskatchewan Museum

[www.royalsaskmuseum.ca](http://www.royalsaskmuseum.ca)

Saskatchewan Provincial Parks

[www.saskparks.net](http://www.saskparks.net)

Saskatchewanwanderer

[www.saskatchewanwanderer.ca](http://www.saskatchewanwanderer.ca)

### Ministry Partner Websites:

Canadian Parks Council

[www.parks-parcs.ca](http://www.parks-parcs.ca)

Community Initiatives Fund

[www.cifsask.org](http://www.cifsask.org)

Creative Saskatchewan

[www.creativesask.ca](http://www.creativesask.ca)

Museums Association of Saskatchewan

[www.saskmuseums.org](http://www.saskmuseums.org)

Provincial Archives of Saskatchewan

[www.saskarchives.com](http://www.saskarchives.com)

Saskatchewan Arts Board

[www.artsboard.sk.ca](http://www.artsboard.sk.ca)

Saskatchewan Heritage Foundation

[www.pcs.gov.sk.ca/SHF](http://www.pcs.gov.sk.ca/SHF)

Saskatchewan in Motion

[www.saskatchewaninmotion.ca](http://www.saskatchewaninmotion.ca)

Saskatchewan Parks and Recreation Association

[www.spra.sk.ca](http://www.spra.sk.ca)

Saskatchewan Regional Parks Association

[www.saskregionalparks.ca](http://www.saskregionalparks.ca)

Saskatchewan Science Centre

[www.sasksciencecentre.com](http://www.sasksciencecentre.com)

SaskCulture Inc.

[www.saskculture.ca](http://www.saskculture.ca)

Sask Sport Inc.

[www.sasksport.sk.ca](http://www.sasksport.sk.ca)

Tourism Saskatchewan

[www.tourismsaskatchewan.com](http://www.tourismsaskatchewan.com)

Wanuskewin Heritage Park

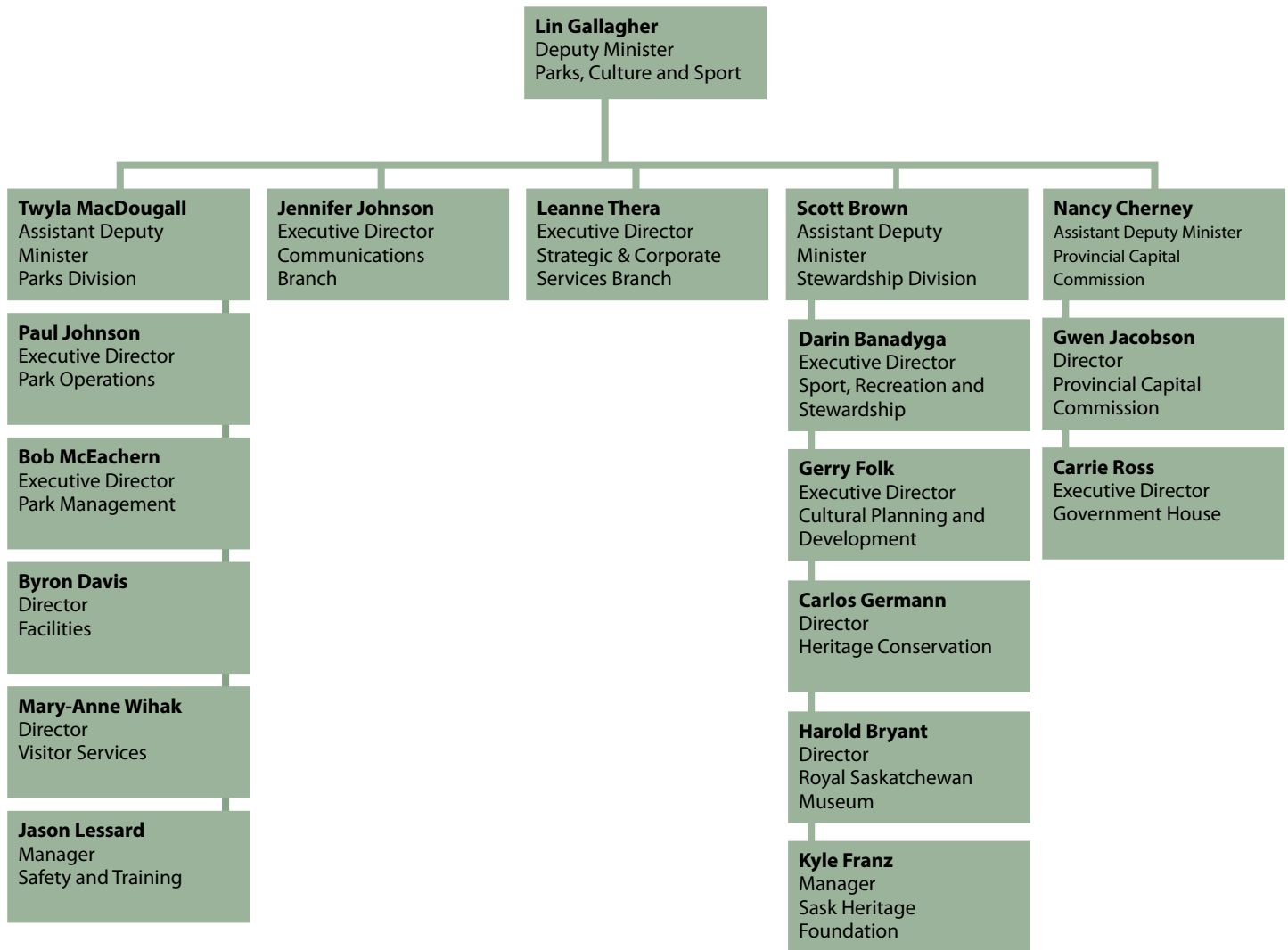
[www.wanuskewin.com](http://www.wanuskewin.com)

Western Development Museum

[www.wdm.ca](http://www.wdm.ca)

## Appendix A - Organizational Structure

### Ministry of Parks, Culture and Sport





## **Appendix B - Ministry Legislation**

*The Air, Army, Sea and Navy League Cadets Recognition Day Act*

*The Archives and Public Records Management Act, 2015*

*The Arts Board Act, 1997*

*The Arts Professions Act/Loi sur les professions artistiques*

*The Athletics Commission Act*

*The Creative Saskatchewan Act*

*The Culture and Recreation Act, 1993*

Jointly assigned to the Minister of Parks, Culture and Sport and the Minister Responsible for the Provincial Capital Commission, the Minister of the Economy, and the Minister Responsible for Tourism Saskatchewan

*The Doukhobors of Canada C.C.U.B. Trust Fund Act*

*The Economic and Co-operative Development Act*

But only with respect to clause 8(a) which is jointly assigned to the Minister of Parks, Culture and Sport, the Minister of the Economy, the Minister of Agriculture, and the Minister of Responsible for Tourism Saskatchewan

*The Grasslands National Park Act*

*The Heritage Property Act*

*The Historic Properties Foundation Act*

*The Holocaust Memorial Day Act*

*The Interprovincial Lotteries Act, 1984*

*The Jean-Louis Légaré Act/Loi sur Jean-Louis Légaré*

*The Meewasin Valley Authority Act*

*The Multiculturalism Act*

Except clauses 4(g) and (h) which are jointly assigned to the Minister of Parks, Culture and Sport, the Minister of the Economy, and the Minister Responsible for Immigration

*The National Peacekeepers Recognition Day Act*

*The Natural Resources Act*

But only with respect to section 18; and sections 3, 4, 14, 14.1, 17 and 23 as they relate to parks

*The Parks Amendment Act*

*The Recognition of John George Diefenbaker Day Act*

*The Recognition of Telemiracle Week Act*

*The Regional Parks Act, 2013*

*The Regional Parks Consequential Amendments Act, 2013*

*The Royal Saskatchewan Museum Act*

*The Saskatchewan Centre of the Arts Act, 2000*

*The Saskatchewan Gaming Corporation Act*

But only with respect to the powers, duties and functions conferred or imposed on the Minister of Parks, Culture and Sport and the Minister of Finance pursuant to Part IV

*The Snowmobile Act*

Part III is assigned to the Minister of Parks, Culture and Sport; and section 41 is jointly assigned to the Minister of Parks, Culture and Sport and the Minister Responsible for Saskatchewan Government Insurance

*The Tartan Day Act*

*The Tommy Douglas Day Act*

*The Wanuskewin Heritage Park Act 1997*

*The Wascana Centre Act*

*The Western Development Museum Act*

These acts and related regulations can be viewed and downloaded from the Government of Saskatchewan Queen's Printer website at <http://www.qp.gov.sk.ca/>.